



# PEAKS Collegiate

---

Experiential Career Pathways for Environmental  
Science in Crowsnest Pass

Chad Kuzyk – Associate Superintendent, Livingstone Range School Division

Joelle Reynolds – Associate Dean, Youth Initiatives, Lethbridge College



**Livingstone Range**  
SCHOOL DIVISION

### **Mission**

Livingstone Range School Division Inspires excellence through meaningful relationships, innovation, and collaboration.

### **Vision**

**Every student,  
every day.**

### **Core Values**

Student-Centered  
Leadership  
Integrity  
Wellness  
Place-Based



### **Vision**

Preparing Learners. Shaping Communities.

### **Mission**

We embrace our responsibility to students, employees and partners who look to us for learning, opportunity and belonging

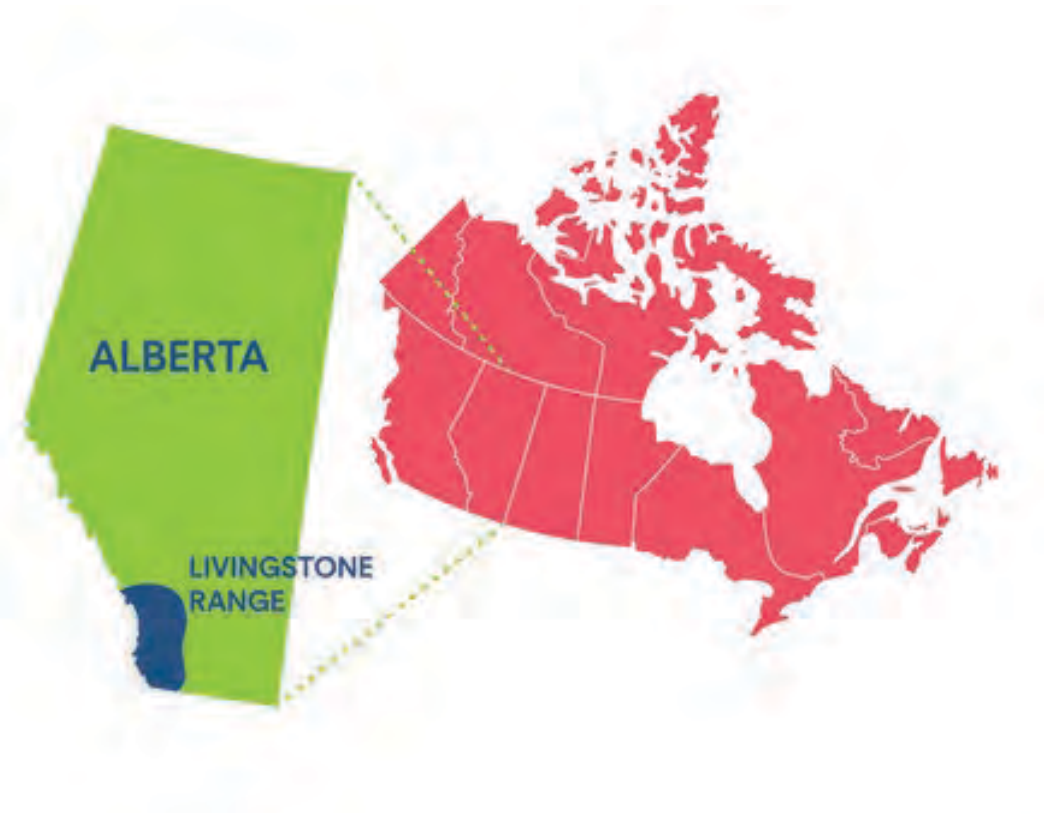
### **Values**

Caring, Dedicated, Responsive

# A little history...

Lethbridge College has collaborated with Livingstone Range School Divisions over several years to:

- The beginning of the Pathway Partnership of Southern Alberta
- Acquired PEAKs facility with support of Lethbridge College
- Dual Credit in Envi Sci through Lethbridge College
- Enhancement Grant – Mobile Field Study Lab
- PEAKs pathway development and collegiate application in collaboration with Lethbridge College







# Our Vision for PEAKS Collegiate

---

## Explore and Discover

Beginning in Grade 7, students explore elements of career pathways and identify a study of interest in the Environmental Sciences. Grade 10 to 12 students have expanded opportunities to discover educational and career pathways in the discipline.

## Hands-on Field Work

In collaboration with our industry partners and Lethbridge College instructors, students work in the field to complete field studies and gain career-specific skills in a hands-on immersive environment, all while earning high school and post-secondary credit.

## The Future Awaits

PEAKS Collegiate students will have a competitive advantage for post-secondary and will be positioned for Environmental Science careers in industries requiring a capable and dynamic workforce.

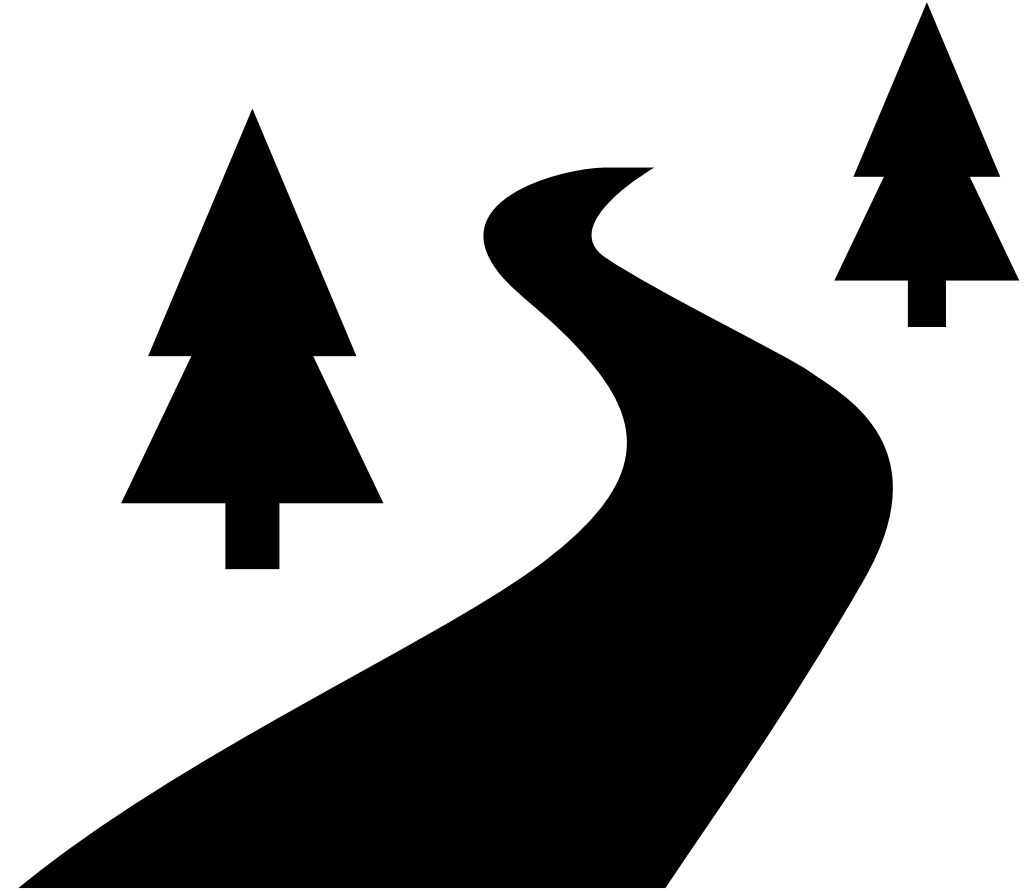


Every student, ev

# What are Career Pathways?

---

Career pathways are formed from flexible, student-centered learning opportunities that start broadly and gradually narrow as students learn about their own interests and aptitudes.



# The PEAKS Environmental Science CAREER PATHWAY

## Mobile Field Study Lab

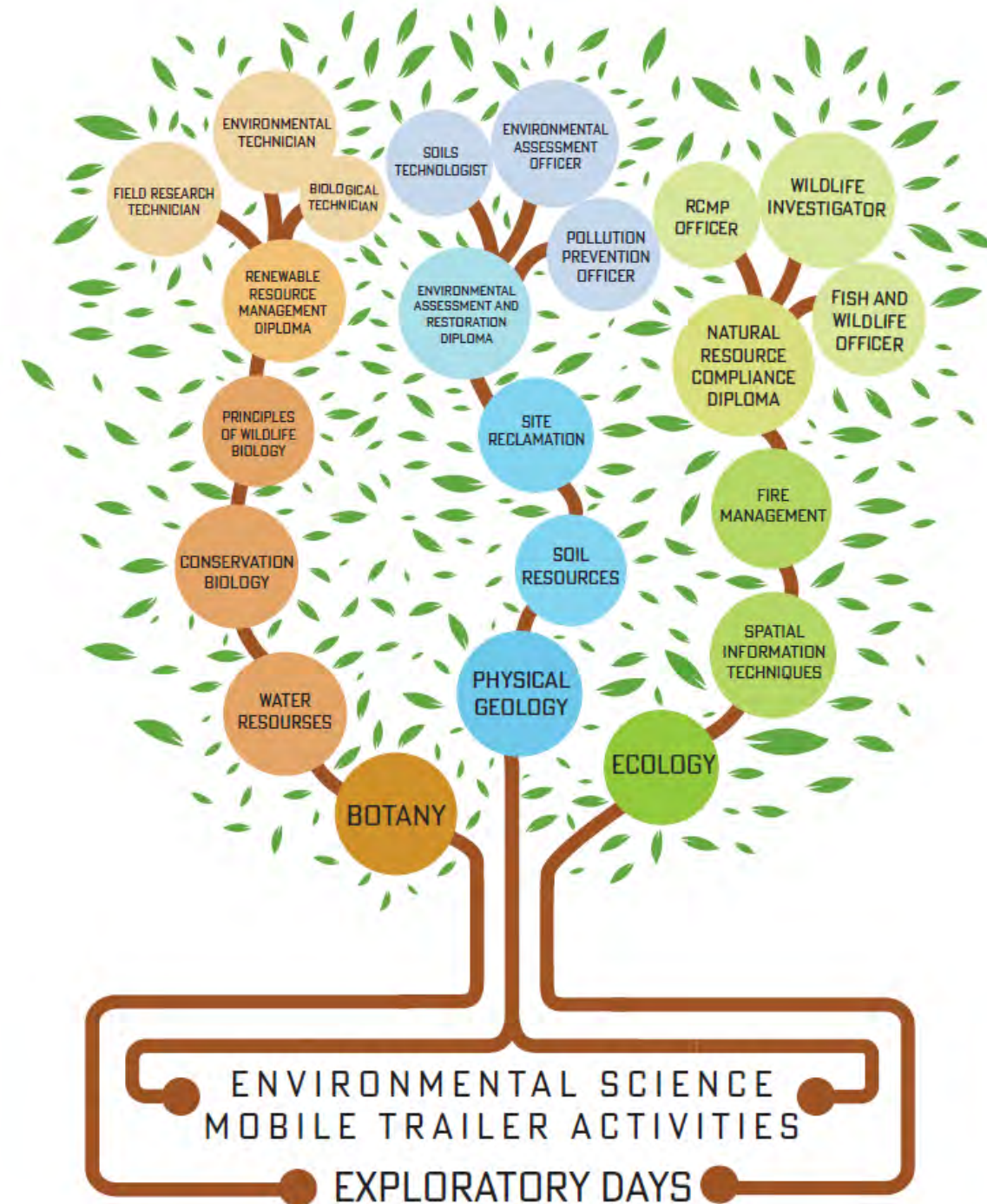
Utilized in K-12 course delivery and to support Dual Credit course delivery

## Grade 7 – 9

Environmental Science Courses  
(CTF Outcomes)

## Grades 10-12

Dual Credit Courses with hands-on labs and fieldwork  
(CTS/PSI and Post-secondary credits)









PEAKS  
ENVIRONMENTAL  
SCIENCE CAREER  
PATHWAY  
***Mobile Field Study Lab***

- Outfitted with microscopes, nets, chest waders, binoculars, spotting scopes, sensors, storage tanks, safety kits, weather gear, water flow measuring software, a generator, and a canopy, the four-season lab allows student learning to be truly experiential and increase the relevancy of the environmental science program of study. This project was funded through the Alberta Education Dual Credit Enhancement Grant.

# PEAKS ENVIRONMENTAL SCIENCE CAREER PATHWAY *Grade 7-9*

---

This 10-week unit of study is designed to introduce junior high students to the concept of environmental sustainability and empower them to become responsible global citizens. Through asynchronous project-based learning and two day-long field trips, students investigate various environmental issues, analyze their impact, propose solutions, and apply their knowledge in real-world settings.



# PEAKS ENVIRONMENTAL SCIENCE CAREER PATHWAY *Grade 10-12*

---



## PEAKS Collegiate Campus

### ENVIRONMENT SCIENCE DUAL CREDIT PATHWAYS

DIPLOMA/DEGREE PATHWAY	YEAR 1	YEAR 2	YEAR 3 <small>Prerequisites needed or select from Year 1 or 2 courses</small>
Environmental Assessment and Restoration		<ul style="list-style-type: none"> <li>Plant Systematics</li> <li>Spatial Information Techniques</li> <li>Soil Resources</li> </ul>	<ul style="list-style-type: none"> <li>Geographical Information Systems</li> <li>Site Reclamation</li> <li>Rangeland Management</li> <li>Forest Management</li> </ul>
Natural Resource Compliance	<ul style="list-style-type: none"> <li>Botany</li> <li>Zoology</li> <li>Physical Geology</li> <li>Ecology</li> </ul>	<ul style="list-style-type: none"> <li>Spatial Information Techniques</li> <li>Introduction to Natural Resource Law</li> </ul>	<ul style="list-style-type: none"> <li>Grasslands and Forest Resources</li> <li>Fire Management</li> <li>Park and Recreation Operations</li> <li>Principles of Wildlife Biology</li> </ul>
Renewable Resources Management		<ul style="list-style-type: none"> <li>Plant Systematics</li> <li>Soil Resources</li> <li>Water Resources</li> <li>Spatial Information Techniques</li> </ul>	<ul style="list-style-type: none"> <li>Principles of Wildlife Biology</li> <li>Conservation Biology</li> <li>Geographic Information Systems</li> <li>Forest Management</li> </ul>

*Students select up to 2 courses per semester*

# PEAKS ENVIRONMENTAL SCIENCE CAREER PATHWAY

## *Industry Engagement*

---

Resource Extraction, Conservation and  
Federal/Provincial Ministries and parks  
Job shadow/paid summer placements  
Eco tourism

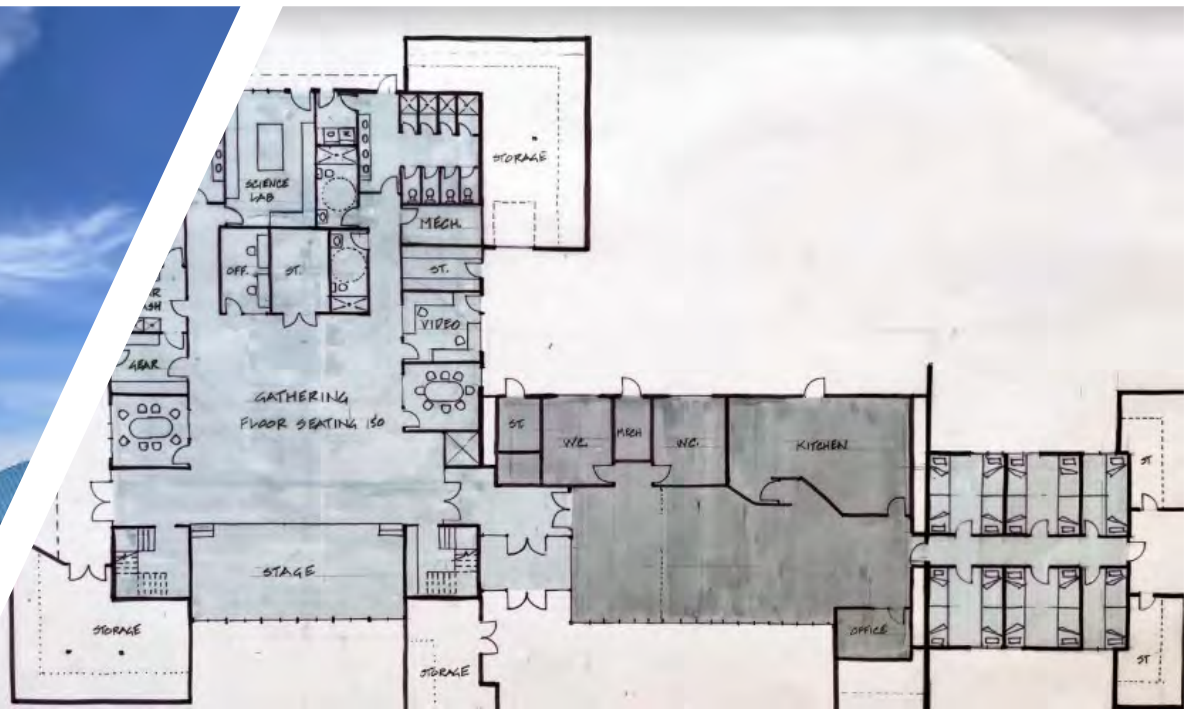
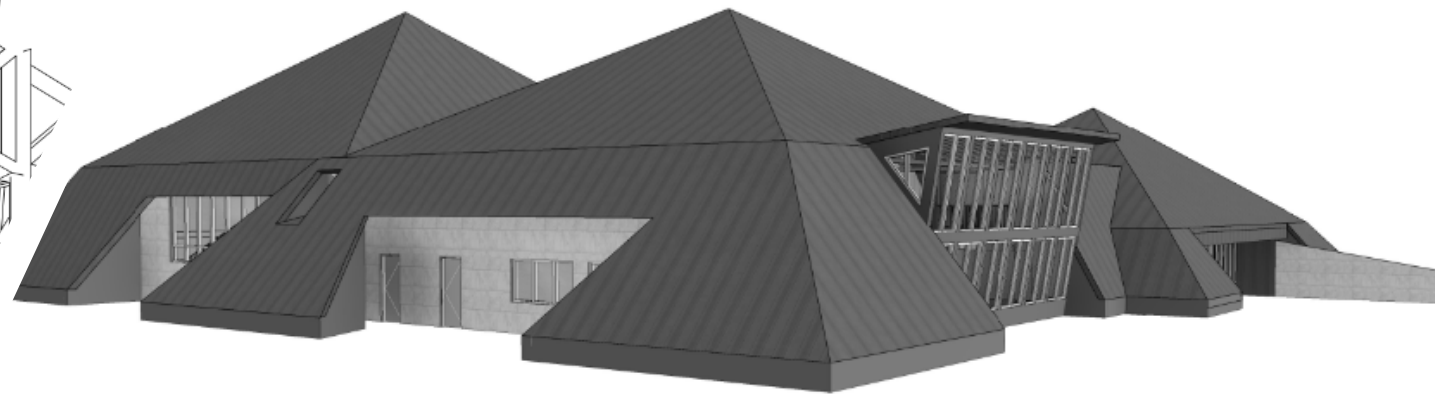
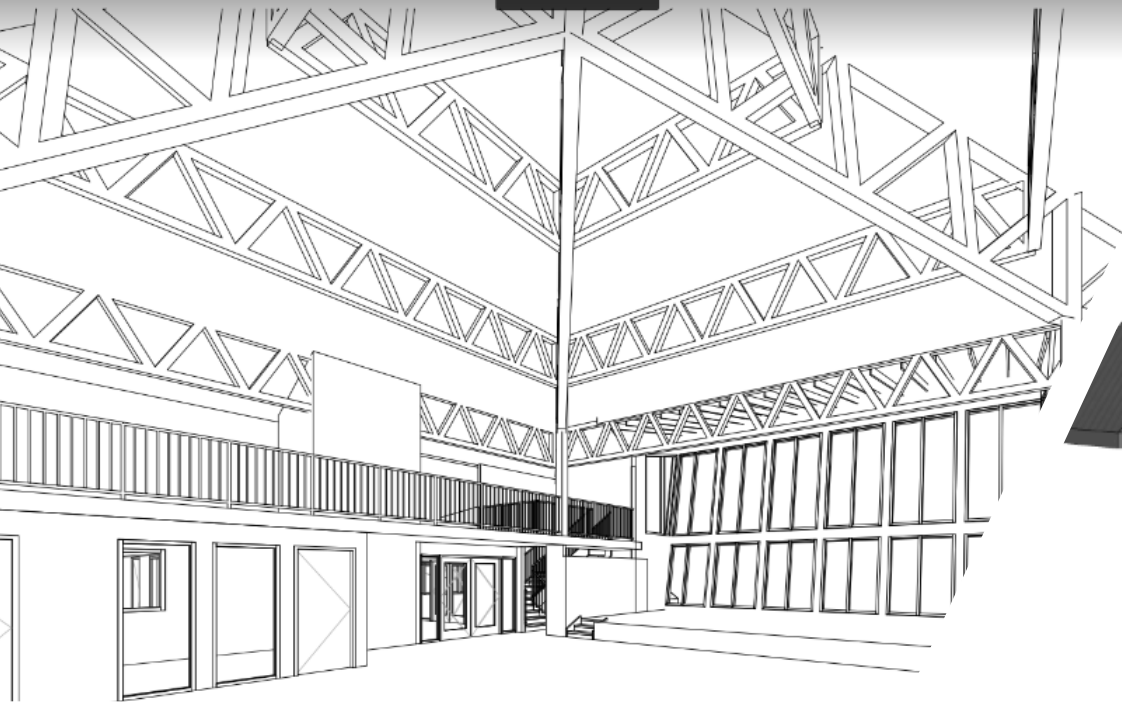
### The WHY

The Professional, scientific and technical services sector will also account for over 30% of net environmental job openings to 2025. Worker retirements will drive most of environmental hiring for many sectors, including:

- Agriculture, forestry, fishing and hunting
- Utilities
- Manufacturing
- Educational services
- Public Administration

Although hiring will need to take place for a variety of environmental sub-sectors, the greatest needs will occur in:

- Sustainability (79,100 net job openings)
- Natural Resource Management (69,000)
- Energy (68,900)
- Fisheries & Wildlife (62,300)
- Environmental Health & Safety (59,400)



# PEAKS

## How to get involved

---

**Open to students from any school authority in Alberta, no cost to students**

contact Chad Kuzyk, Jason Clifton or simply email [dualcredit@lrsd.ab.ca](mailto:dualcredit@lrsd.ab.ca) for information on having your students participate in exploratory and dual credit programming

Industry Partners

- contact Chad Kuzyk at [kuzyk@lrsd.ab.ca](mailto:kuzyk@lrsd.ab.ca)

- Jason Clifton at [cliftonj@lrsd.ab.ca](mailto:cliftonj@lrsd.ab.ca)

Website - <https://peakscampus.ca/peaks-collegiate-campus>



# Let's get hands-on

---

Jason Clifton

