



CASS

College of
Alberta School
Superintendents



Continuing
Education
Program

Sustainable Career Pathways in Collegiate Education

*CASS Annual Conference
March 20, 2025*

Session Insights and Key Takeaways

Key Idea

Students thrive when schools:



Session Overview & Notes

Alberta Education Collegiate Schools Overview

-
-
-
-
-
-
-
-

Programming Requirements

-
-
-
-
-
-
-
-

Current State

-
-
-
-
-
-
-
-

Session Overview & Notes

Current Pathways

- • • • •

Evaluating Local Economy Needs

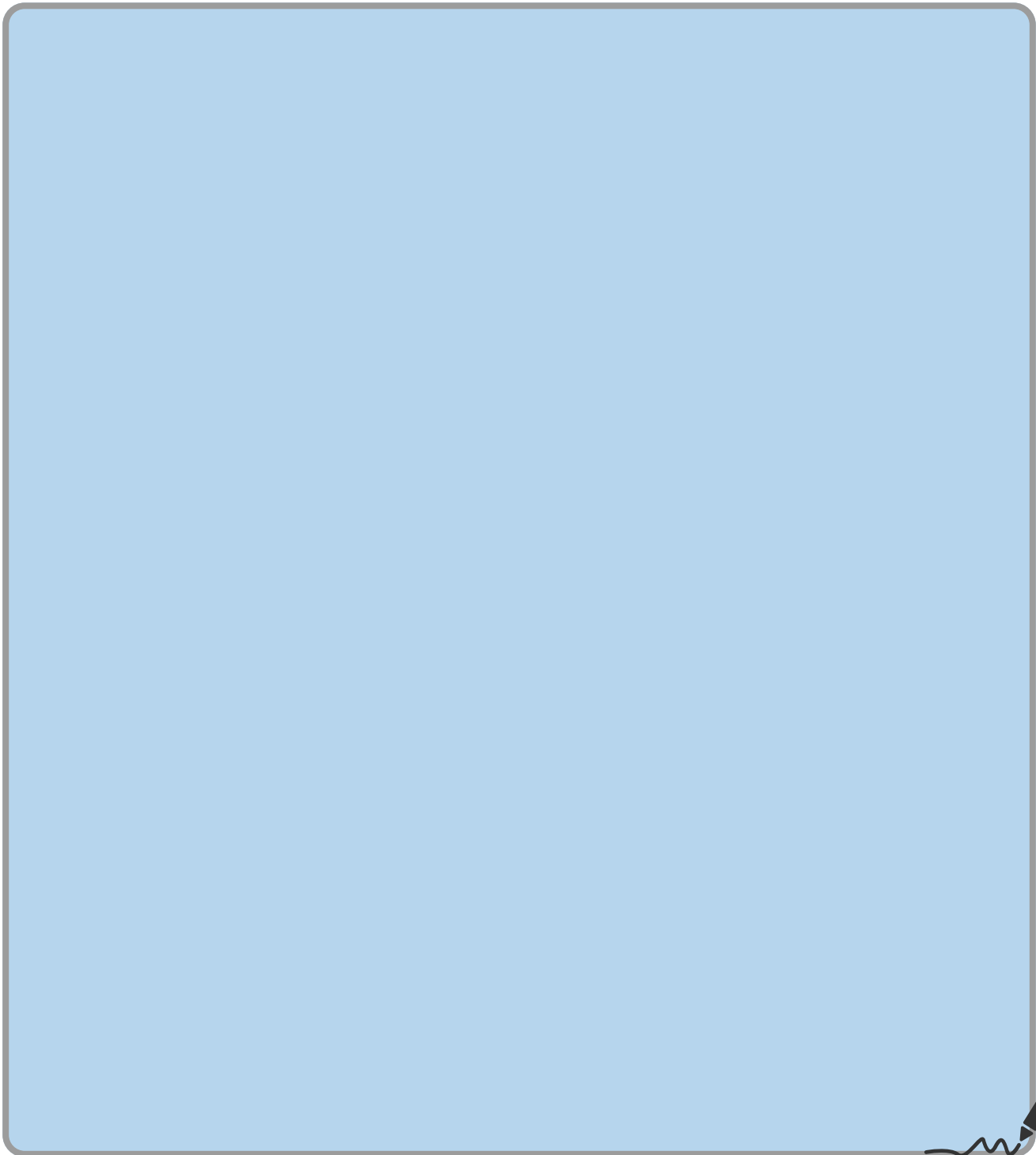
-

Alberta Stories of Practice: Building Career Pathways for Student Success



Prairie Rose Public Schools

- **Career Pathway:** Professional Certification
- **Darren MacMillan**, Director of Enhanced Programming

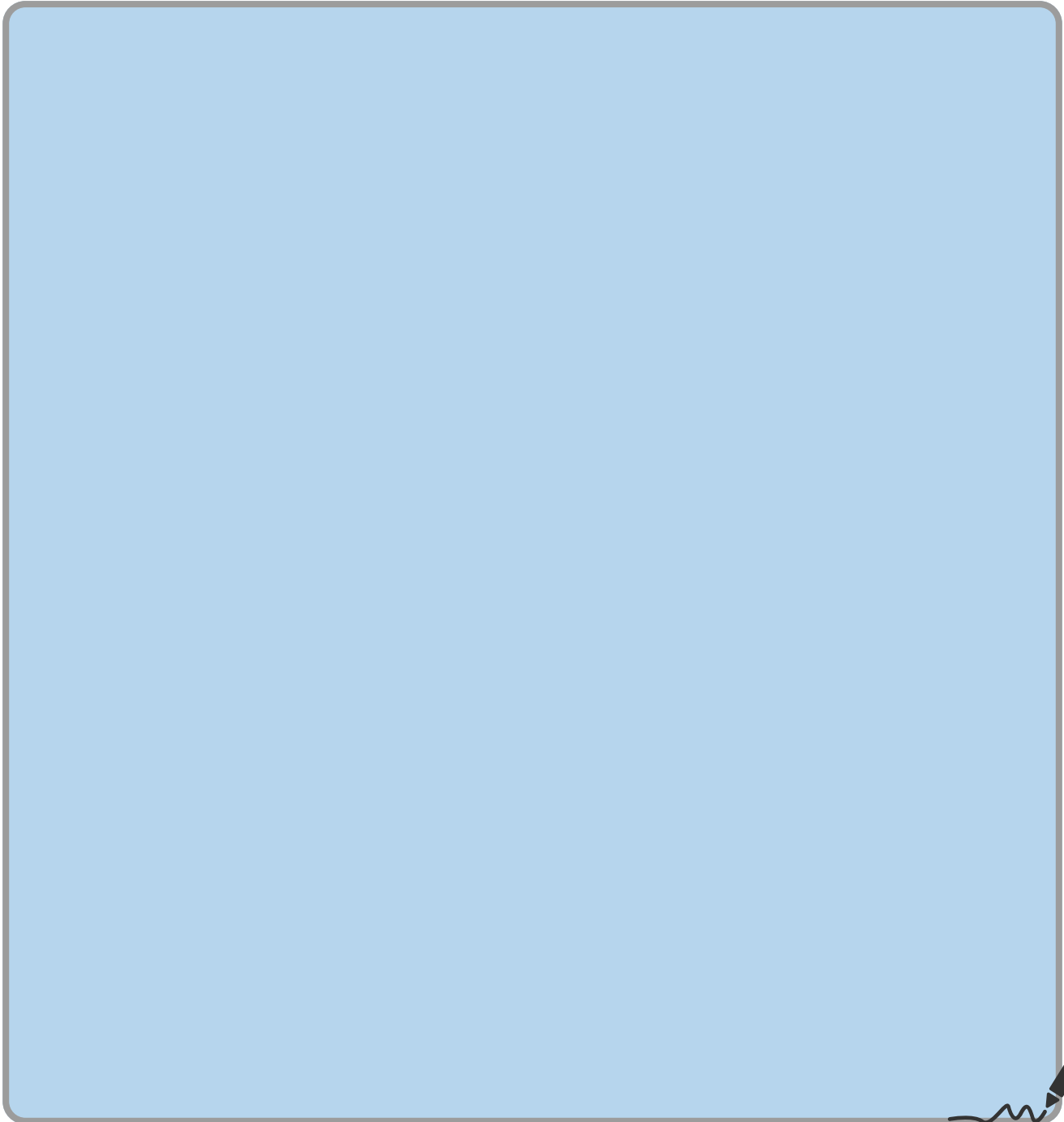


Alberta Stories of Practice: Building Career Pathways for Student Success



Black Gold School Division

- **Career Pathway:** Trades - Pre-employment and Work Placements
- **Calmar Secondary Collegiate School**
- **Terri Reid**, Curriculum Manager

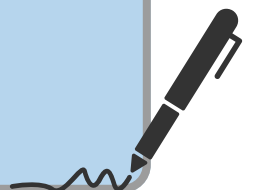
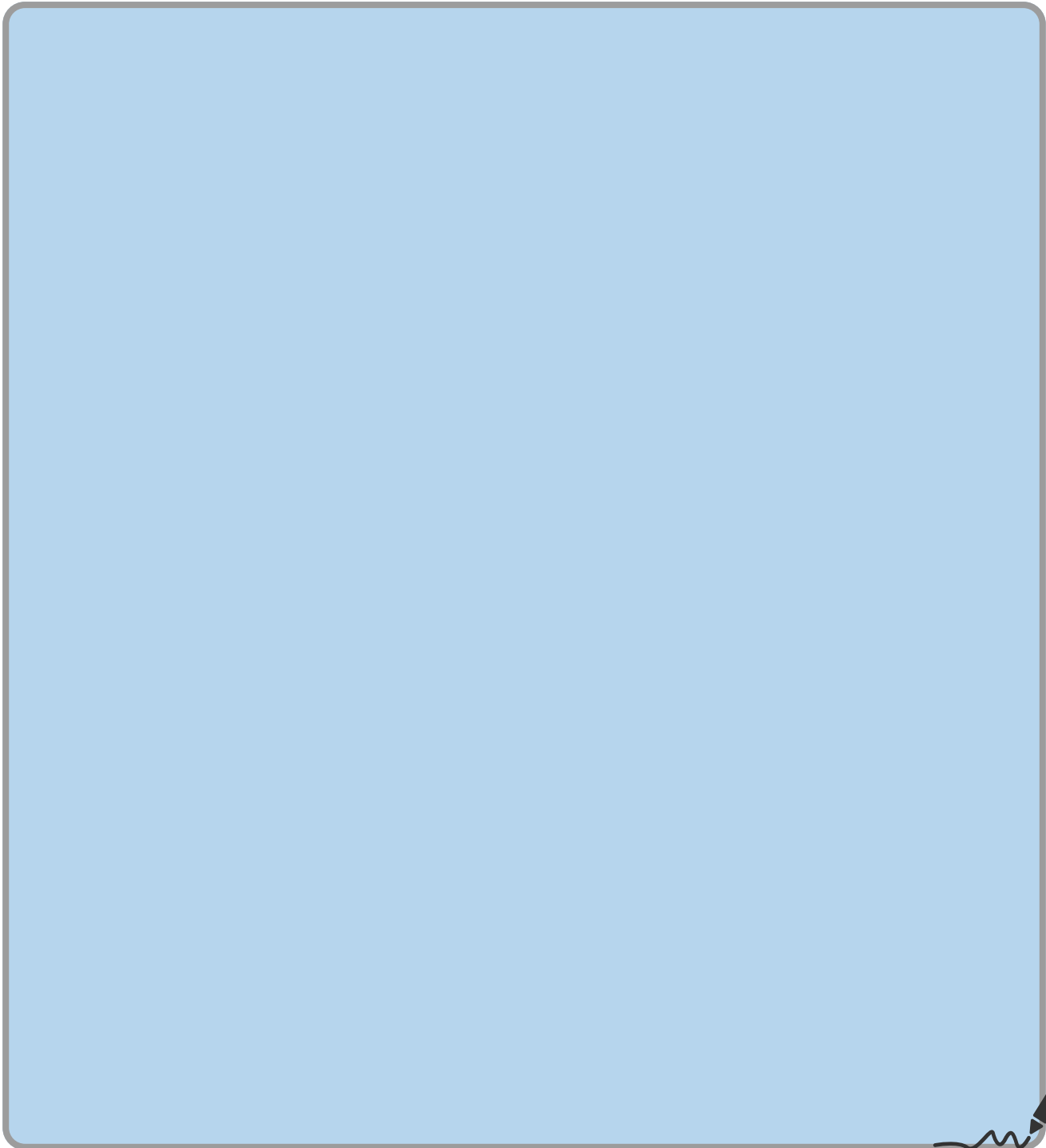


Alberta Stories of Practice: **Building Career Pathways for Student Success**



Fusion Collegiate

- **Career Pathways to Advanced Education**
- **Chris Meaden**, Superintendent



Alberta Stories of Practice: Building Career Pathways for Student Success



**LETHBRIDGE
POLYTECHNIC**



OLDS COLLEGE
OF AGRICULTURE & TECHNOLOGY

Two Post-Secondary Perspectives

- **Joelle Reynolds**- Associate Dean of Youth Initiatives, Lethbridge College
- **Jackie Taylor** - Director, Community Learning Campus for Chinook's Edge School Division and Olds College



Collegiate Schools Measuring Success

THINK

- Why is AERR reporting important for collegiate programming?

PAIR

Discuss your thoughts with a partner. Review the following:

- **Purpose:** Universal Data Points for Alberta Education (AERR) Reporting
- **Tracking Long-Term Impact:** Measures career readiness, post-secondary transitions, and student retention.
- **Systematic, Large-Scale Reporting:** Ensures consistent educational outcomes across programs through standardized data collection.
- **Comprehensive Scope:** Expands beyond student feedback to include program demand, post-secondary success, and workforce readiness.
- **Ensuring Consistency:** Establishes uniform reporting practices for accurate and reliable data submission to Alberta Education.

SHARE

- Did you and your partner identify any other purposes for Collegiate School AERR Reporting?

Universal Data Points Identified by the Collegiate Community

Student Participation & Engagement

- Track student enrollments in programs/courses (including exploratory programming).
- Equity, Diversity & Inclusion: Monitor access by student demographics (e.g., students with exceptionalities, Indigenous students, EAL students).
- Measure program completion rates to analyze student retention and interest shifts.
- Academic Performance & Growth (Tracking grades, pass rates, assessment trends).

Credit Attainment & Credentials

- Record the number and types of credits awarded (including Career Pathway Education Credits - CPEC).
- Track industry credentials and certifications earned by students.

Post-Secondary Transition & Outcomes

- Measure PSI transition rates for dual-enrolled students.
- Track work-integrated learning experiences (apprenticeships, placements, further education/training)
- Employment & Career Readiness (Tracking job placements, employer feedback)

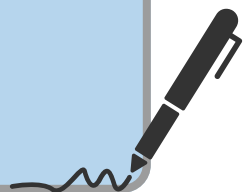
Student Satisfaction & Feedback

- Collect qualitative data through student surveys to understand the impact of programs on student growth and success.
- Develop standardized survey questions for consistent data collection across programs.
- Gather compelling impact stories highlighting how programs have supported students, particularly those at risk of not completing high school or who previously didn't see themselves pursuing further education.

Program Demand & Capacity

- Monitor waitlist numbers to assess unmet demand.
- Analyze student participation rates relative to total student population.

Key Insights and Takeaways



Resource Contacts

Eric Tetreau

Manager, Accreditation and Monitoring
Eric.Tetreau@gov.ab.ca

Jennifer Robson

School Accreditation Lead
Jennifer.Robson@gov.ab.ca

Joelle Reynolds

Associate Dean of Youth Initiatives
Lethbridge College
joelle.reynolds@lethbridgecollege.ca

Jason Kupery

Director of Learning
Palliser Schools
jason.kupery@pallisersd.ab.ca

Christine Meaden

Superintendent
Fusion Collegiate
meadenfusion@gmail.com

Jason Kupery

Director of Learning
Palliser Schools
jason.kupery@pallisersd.ab.ca

Darren MacMillan

Director of Enhanced Programming
Prairie Rose Public Schools
darrenmacmillan@prrd8.ca

Boyd Craven

Assistant Superintendent
Prairie Rose Public Schools
boydcraven@prrd8.ca

Terri Reid

Curriculum Manager
Black Gold Schools
terri.reid@blackgold.ca

Jackie Taylor

Director, Community Learning Campus for
Chinook's Edge School Division and Olds College
jtaylor@cesd73.ca

Colleen Symyrozum-Watt

CASS Consultant
symwatt.colleen@gmail.com