

Leveraging Career Education to Maximize Student Success



Introductions



Chris Stiles, Director of Strategic Programs & Leadership

Justin Klaassen, Principal, Calmar Secondary Collegiate School



Erin Tisdale, Director of Curriculum & Instruction Gr 7-12

Yolanda Chang, eLearning and Dual Credit Lead Teacher



Getting to Know YOU

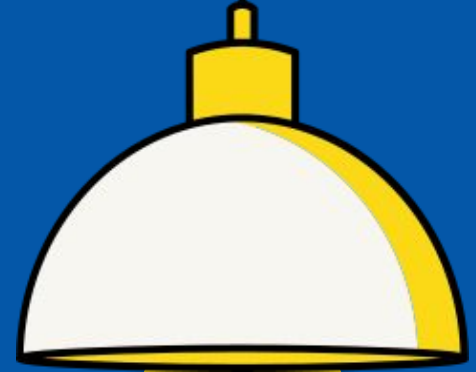


Instructions:

- Open photos on your phone.
- Scroll down three times.
- Choose one photo.

At your table:

- Introduce yourself
- Where you are from
- Your role
- The context of your photo.



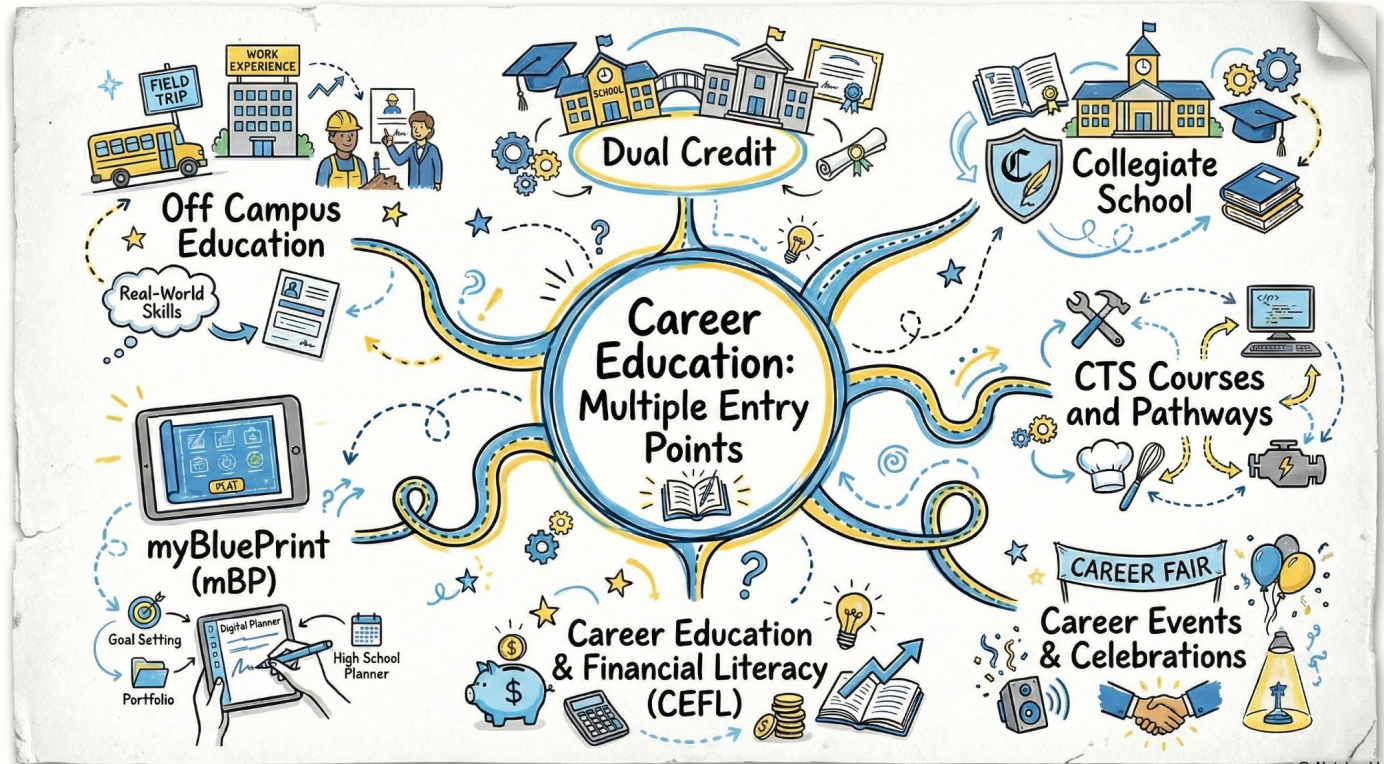
We will:

- Understand the multiple entry points/pathways in Career Education within the Black Gold School Division and how they are **interconnected**.
- **Explore** the roles of each entry point/pathway in supporting students' transition to their career and/or post secondary institution.
- Develop an understanding of how you can better support students in choosing entry points/pathways that aligns with their career goals in **your own context**.

Learning Intentions



Career Education in Black Gold School Division



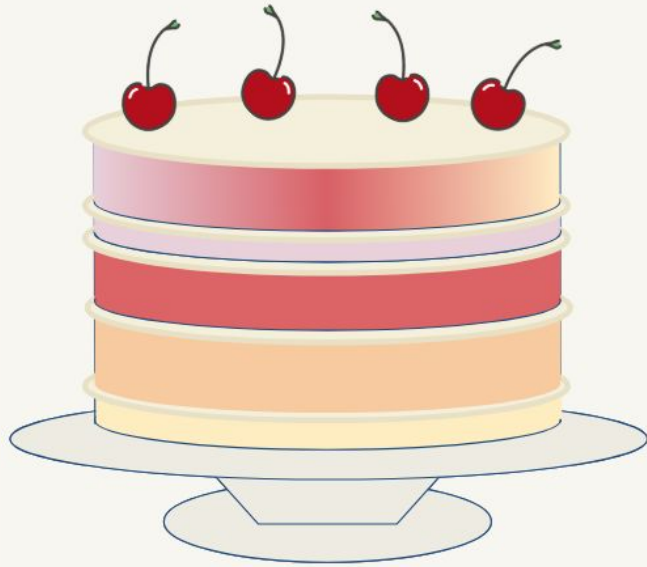
Creative Questioning:

What wonderings do you have?

What are you curious about?

Generate a list of questions about our topic

Layer Cake or Trifle?



Black Gold Collegiate Programming

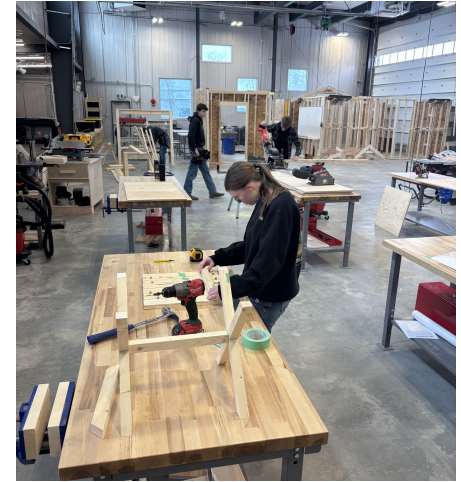
Trade Exploration (10)

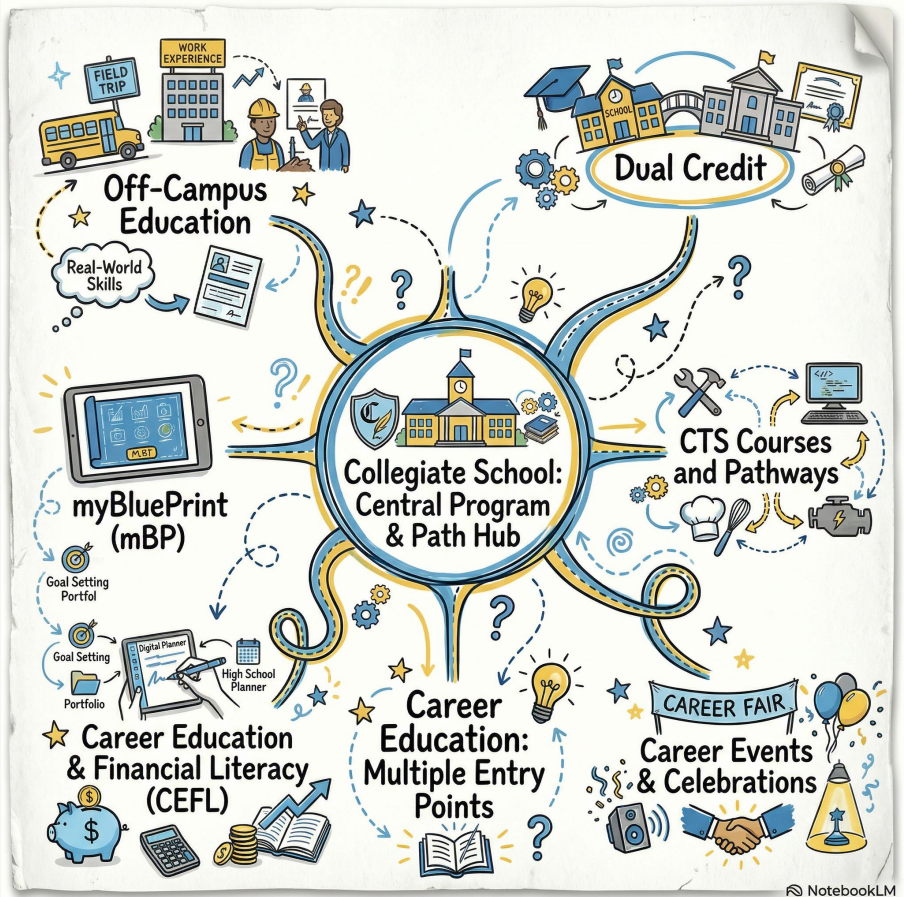


Trade Skills (11)



Trade Education (12)





NotebookLM



Critical Components of Calmar Collegiate



Career Pathway Focus

A specific career pathway of focus within a multi-year experience.



Program Delivery Methods

Delivery of purposeful career pathway programming through;



The use of CTF/CTS and other course delivery models



Dual credit programming with a post-secondary partner



Experiential learning opportunities and work experience within the industry



Student Support System

Design of student supervision and coaching models that provide frequent, ongoing support for student success across their career pathway learning.

Trade Exploration (Grade 10)



'Try a Trade' Days

Monthly hands-on experience at top training institutions in Edmonton.

Trips include:

- Carpentry
- Electrical
- Pipe Trades
- Sheet Metal
- Iron Worker
- Painter
- Millwright
- Insulator



CTS Credits

Earn CTS Credits as a direct part of your participation in the program.



Dual Credit Opportunity

Partnering with **Portage** to offer **3 additional credits** for the 'Intro to Trades' program.

Trade Skills (Grade 11)



Program Overview

Afternoons in the Collegiate shop led by Mr Wallis (Teacher / Electrician).

Includes:

- Carpentry, Electrical & Pipe Trades
- Guest seminars from industry Journey People
- CTS credits earned during shop time
- Resume & Employment skills training



Safety & Certifications

Complete Foundations of Industry Workplace Safety 35

Earn essential industry certifications including:

- H2S Alive & WHMIS 2015
- Confined Space Entry
- Transportation of Dangerous Goods (TDG)
- Ground Disturbance
- Flammable Substances Control
- Fall Restraint Systems

First Period Trade Training (Grade 12)

Available Trades

Carpentry, Electrical, and Pipe Trades
Common

- Complete ILM's and first period modules with **Qualified Red Seal instructors**.
- Option to challenge the **AIT first period examination** upon completion.
- Self-enrollment allowed; no apprenticeship sponsorship required for entry.
- Develop theoretical and practical skills for future apprenticeships.

15 Credits

30-level high school credits

RAP Compatible

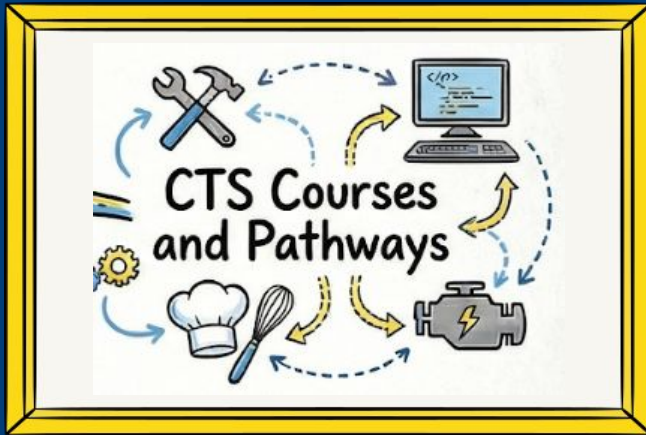
Works in conjunction with RAP
placements

Eligibility

Open to 4th and 5th year high school
students

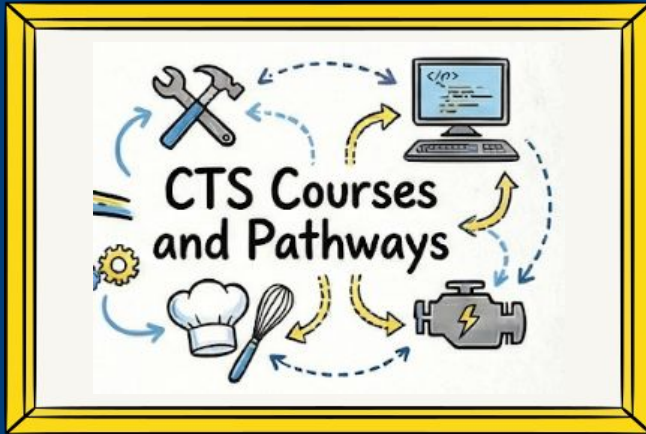


CTS Courses and Pathways allow students to:



- Explore interests and career options
- Acquire the attitudes, skills, knowledge, and values for a potential career
- Work towards postsecondary, apprenticeship training, or the workforce

Context & Connections Matter



- Context considerations:
 - Credentialed
 - Specialized Skills
 - Skills Canada
 - Journeyperson

- How do you create structures in your system to support CTS courses and pathways?

Off-Campus Teacher Program & Strategic Partnerships

Division-Led Off-Campus Program

Focus areas: WE, RAP, Green Certificate

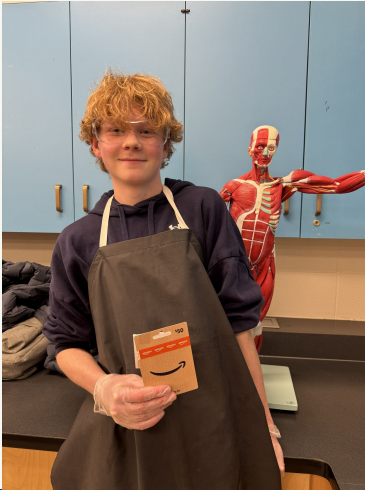
- Semi-annual teacher meetings
- Div 4 Admin presence
- Collaborative conversations & shared PL opportunities
- Mentoring & Problem-solving Think Tank

CAREERS: The Next Generation

Strategic Alliance

- Strong partnership & Integral Team Member
- Regular meetings and shared projects





myBlueprint School Coordinated Support

- Division Lead and School Allocated FTE/Support
- Greatly improves student usage and curriculum tie-ins
- Agreed upon scope & sequence by Grade
- Strategies to Bolster Use in Gr. 11/12
- Key software support for the upcoming CEFL curriculum



Division Sponsored Career-Related Events

- Annual Career Fair
- Girls in STEM
- Student Leadership Summit
- Celebration of the Arts
- Sponsored Events (SHAD, Open Houses, School-Based Post-Secondary Fairs)



How Events Layer Together

The Positive Synergy!

- Students seeing themselves in potential career pathways
- Interactions with employers both for students and staff (Bringing Resumes!)
- Direct links to employment
- Guidance for students uncertain of their future direction



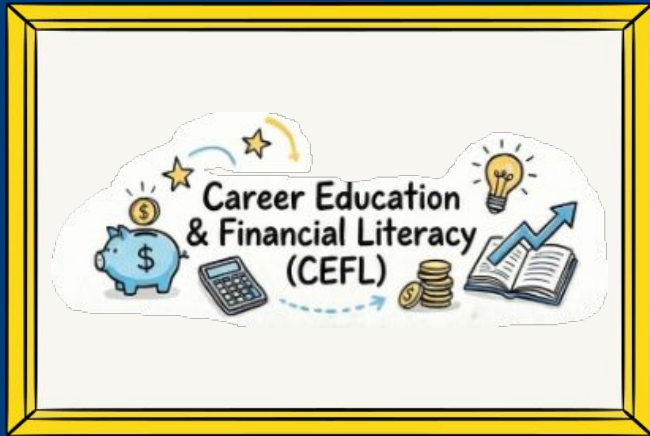
What do “Career Events” look like in your school division?

What partnerships support this work?

What roles support these programs?

What are some additional possibilities?





CEFL 7-9 aims to:

- Connect self-awareness and career exploration
- Build workplace readiness skills
- Promote experiential learning and hands-on opportunities

BGSD CEFL Community of Practice

Dual Credit allows students to:

- discover or build on career interests and enhance career exploration
- prepare for the transition to postsecondary or the workplace

Our context:

- 7 postsecondary partners
- 60+ courses
- Wide variety of career areas
- Online, asynchronous





? How can programming in earlier grades support career education in high school?

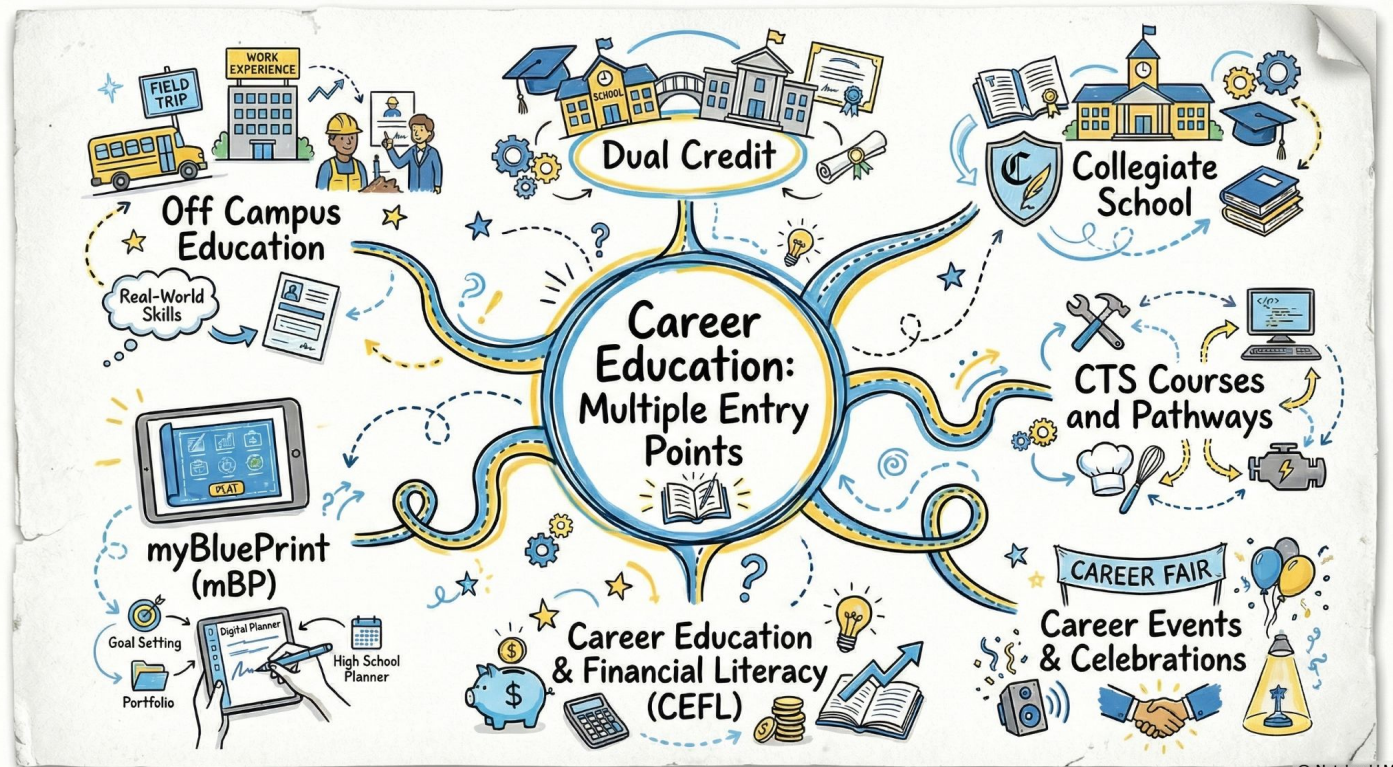
The Power of the Hexagon



[Digital Hexagonal Thinking Tool](#)

[Hexagonal Thinking Routine](#)

Career Education in Black Gold School Division



Reviewing your questions & wonderings from beginning of the presentation.

Any additional questions or suggestions for our Black Gold School Division Team?

© NotebookLM



You have:

- ❑ deepened your understanding of the multiple entry points/pathways in Career Education within the Black Gold School Division and how they are **interconnected**.
- ❑ **explored** the roles of each entry point/pathway in supporting students' transition to their career and/or post secondary institution.
- ❑ developed an understanding of how you can better support students in choosing entry points/pathways that aligns with their career goals in **your own context**.

Success Criteria





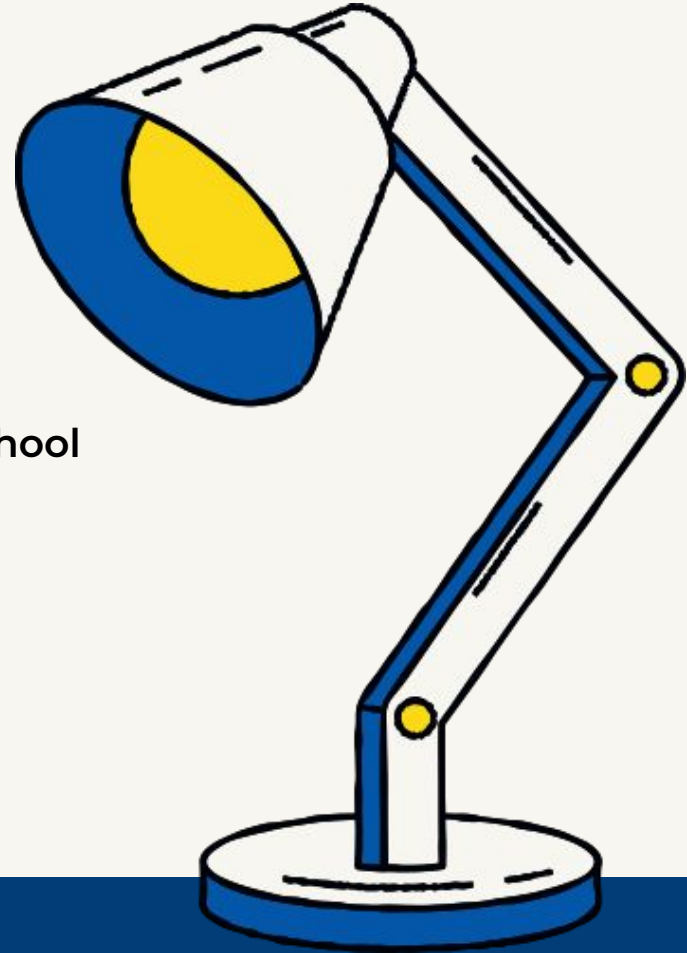
Thank You

Chris Stiles, Director of Strategic Programs & Leadership
chris.stiles@blackgold.ca

Justin Klaassen, Principal, Calmar Secondary Collegiate School
justin.klaassen@blackgold.ca

Erin Tisdale, Director of Curriculum & Instruction Gr 7-12
erin.tisdale@blackgold.ca

Yolanda Chang, eLearning and Dual Credit Lead Teacher
yolanda.chang@blackgold.ca





**BEFORE YOU JUDGE A PERSON,
WALK A MILE IN THEIR SHOES.
AFTER THAT WHO CARES?
THE PERSON IS A MILE AWAY
AND YOU HAVE THEIR SHOES!**

Inspired by Billy Connolly